

Knapton News



Issue 7

June/July 2008

Thank you for your help!

Many thanks to all the residents of Knapton for their excellent response to the second Village Plan Questionnaire. We had a huge number of returned forms and lots of positive feedback.

Apologies to all the children aged 5-9, as I managed to delete your category from the age group table in the questionnaire!

Many of you were interested in forming various clubs. In particular, it looks as though the Local and Family History Group, the Gardening Club and the Youth Group will definitely go ahead and several of the other clubs are possible, although the numbers are smaller. We anticipate the clubs will commence in September, and there will be more about when and where in the August/September edition of Knapton News.

A good number of residents have also volunteered to help organise village social activities. The Steering Group will be contacting, during the next couple of months, all those of you who have given your names to help with a social event or shown an interest in a group activity.

On Page 7 of this edition, there is a report from the new MADRA Committee. Your support of MADRA is making a huge difference to what can be achieved and we are looking forward to our MA-

DRA volunteer groups working with the Committee to provide activities we can all enjoy.

Buses:

Our District Councillor (Graham Jones) has, at the request of Knapton Parish Council, adopted the lack of buses to and from Knapton (together with similar problems in other local villages) as one of his projects. He is working hard on our behalf and we hope to be in a position to report progress in the next edition of Knapton News.

Footpath Project:

The first stage of the project, i.e. the footpath from Knapton to Mundesley, is progressing well. The feasibility study has now been completed and grant funding is being sought. The footpath from Knapton to North Walsham is far more complex, and the engineers working on the feasibility study for this footpath are still trying to tackle various 'problems'!

The Village Plan Steering Group had hoped to complete and circulate the Village Plan by the end of July. Due to unforeseen problems, this will no longer be possible, but we are optimistic that we can achieve late September!

Tricia Doidge

(On behalf of the Knapton Village Plan Steering Group)

We are very grateful to the Bacton Gas Terminal complex (Interconnector, National Grid, Perenco, Shell and Tullow Oil) for their kind sponsorship of this publication



nationalgrid



To receive the newsletter via email, please contact pbd49@btinternet.com
Copy deadline for the August/September edition is **strictly** Friday, 25 July.

Knapton Crafts

Anna Ovenden runs 'Knapton Crafts' from her home in our village.

Anna was born in Malaysia and is married to Robert. They have a daughter who lives in Canada, a son who is married and three adorable grandchildren. Over the years, during Robert's career, they travelled and lived in different countries all over the world and in different parts of the UK, before finally deciding to settle in Norfolk.

Having retired early from full-time teaching, she is now able to pursue her hobby, making glass jewellery and accessories, which she exhibits at her own events along the North Norfolk Coast.

Anna has always been an admirer of quality handmade crafts, but was inspired to organise her own fairs after exhibiting at a series of events herself, where she became aware of the huge demand for something a



little different from the products available in every high street.

The beautiful North Norfolk coast attracts many visitors all year round and is the perfect backdrop for the fairs. Anna's intention is to bring local artists and crafters together with tourists and visitors, who are often keen to buy a work of locally made art or craft to take home.

Knapton Crafts' events are designed to promote unique handcrafted products of excellent quality. As Anna herself puts it "Handmade products are becoming very popular as people look for something that is not mass produced; at Knapton Crafts they will find such products".



Events are planned during 2008 for Aylsham, Blakeney, Cley, Holt, Mundesley and Walcott, as well as at The Forum and The Dragon Hall in Norwich.

Anna's own highly individual range of jewellery (The Arabella Collection) is always available at her craft fairs, as well as at other outlets throughout Norfolk. As well as organising the Knapton Craft events, Anna still finds time to fuse her own glass beads, which she combines in exquisite colour combinations to create necklaces, ear-rings and bracelets, as well as experimenting with other media to produce unique jewellery that makes a perfect gift.

Each item of jewellery is handmade by Anna from carefully selected materials and every piece is a unique one off piece. She works mainly with Reichenbach and Ask 104 glass for her glass beads. Each bead evolves from the molten tip of hot glass, wound on a mandrel worked in a flame until the desired result is achieved.

The combination of silver and Swarovski Crystals makes each piece of jewellery easy to wear and show off the beauty of the beads. Anna also makes her own silver jewellery using Silver clay and Sterling silver, as well as handcrafted gemstone jewellery. She is therefore able to offer customers a wide choice and variety to choose from.

Visitors are welcome to visit Anna's studio/workshop to see 'Beadmaking Demonstrations' by appointment. You can also see her at various Craft events and exhibitions around Norfolk.

If you would enjoy visiting Anna at her studio in Mundesley Road, Knapton, please contact her on 07817 635996 or visit her website www.norfolkcraftfairs.co.uk.

If you run a business from our village and would like to see it featured (free of charge) in an edition of Knapton News, please contact Tricia on 01263 721855

Obituary - Joan Tebbutt

Sadly, in her hundredth year, Joan Tebbutt passed away at The Manor House, North Walsham, on March 26th.

Joan and Gerald came to live in Knapton nearly thirty years ago, with their Corgi Algie, changing the name of the bungalow to "Woodruff", which was their favourite woodland flower. They soon settled in and started turning their attention to the rather bare garden, making it wildlife friendly with lots of trees, shrubs, roses and cottage garden flowers.

It was decided that all the neighbours should call them Mr & Mrs T, as we were a lot younger than them and we all had young children at that time.

They went to Knapton Church and were both on the PCC. Joan helped with the flowers and decorated the Church for Christmas, Harvest Festival etc.



Joan was born at Ormesby, near Great Yarmouth, on 14 February 1909. She loved sailing on the Broads with her brother, and in the winter ice skating on them. She joined the WRAF in the War and was sent to Lincolnshire for training. She was then posted to Wiltshire, where she drove a lorry taking bombs out to Lancaster bombers and then transported the crew to their aircrafts when it was time for their missions. She also drove staff cars.

She was a member of the Mundesley Golf Club, where she played for many years, still going down on Wednesdays for lunch with friends long after she had to stop playing. She also enjoyed going to the North Walsham Community Centre for lectures. She loved reading the classics and poetry. One of her favourite poets was John Betjamen, who she met when he was staying at the Manor in Mundesley. She joined the W.I., which later became the Knapton Ladies Club, and was also a member of Knapton Women's Own. She was still helping with the teas and biscuits into her nineties!

For many years, Joan and Charlie (her Jack Russell) would open her garden, when it was in full bloom, for a coffee morning to raise funds for charity. She loved being with people, be it young or old. She thoroughly enjoyed garden parties, weddings, barbeques etc. and was great company to take out for a coffee or day trip.

Joan was a great neighbour, who will be missed by all her friends at the bottom of The Street.

Linda Risebrow



Remember to visit our new Knapton website

www.knapton-village.co.uk

If you have items for the newsletter, please contact Tricia on (01263) 721855, email pbd49@btinternet.com, or drop them in to 'White Rose House' Hall Lane

BARN DANCE

All who attended the Barn Dance at Northrepps Village Hall on 26 April said how much they had enjoyed the evening. We had fun dancing, learning new dances and watching the dancers and we had a good Ploughman's supper. Our grateful thanks go Mick the Caller and to all those who worked so hard to make the evening a success. The event raised the much-needed sum of £670 for our Methodist Church Funds. It is our policy to hold only enough funds to cover six months expenses and we were seriously low.



**Knapton Women's Own
Strawberry Tea**

Tuesday 1 July at 2:30 p.m.

Village Hall, Knapton

£3.00 per person

Bring and Buy Raffle

All proceeds from this event go to our
Chosen charity 'HOPE'

*We welcome non members to this event
and hope you will join us
for a delicious strawberry tea
(This event is not limited to ladies only!)*

**GUINNESS CHALLENGE
COFFEE MORNING
Saturday 12th July 2008**

You may think it rather strange that the words 'Guinness' and 'Methodist' should appear in the same sentence! That is because we are asking you to come along to a Coffee Morning at Knapton Methodist Chapel from 10.00 a.m to 12 noon, and to bring along any spare 2p coins, so that you can be part of the Guinness Challenge by the Methodist Churches of



East Anglia. The aim is to set a world record in the amount collected for charity in 2p coins alone.



We are calling the event **THE NCH TUPPENNY RUSH**. The title is taken from the Saturday morning film shows for children that were held in most large towns from the 1920's onwards, and which, in their early days had an admission charge of tuppence (2d). Although our tuppenny rush is rather different, it is about children. We want to help the children's charity, NCH, to give a helping hand to those who are among the most vulnerable in our society.

There will be Coffee and Cakes and we will of course accept all other types of money as well!

Doug Willis

(NCH Registered Charity No 1097940)

**Church of St Peter & St Paul, Knapton
Sunday 29 June at 10:00 am.**

On 29 June, our Patronal Festival will take place at 10:00 a.m.

This is a Team Service and we are delighted to announce that Pat Baggaley will conduct her first Holy Communion, having been ordained the previous day.

Roger MacPhee

CHURCH SERVICES

Church of St Peter & St Paul, Knapton
9:30 a.m. each Sunday (service varies;
see details in the Church porch)

Knapton Methodist Church
10:00 a.m. Service and Sunday School

What's on in and around Knapton?

June:

- 3 Knapton Women's Own 2:15 p.m. (The Chapel)
Mrs L. Winter
- 6&7 Zinc Alloy 6th Meltdown Rally (MADRA)
- 16 Knapton Ladies Club 7:30 p.m. (Village Hall)
Brian Cheesman - Crooks and Celebrities
- 19 Knapton Book Club
- 29 Patronal Festival, St Peter & St Paul, Knapton 10:00 a.m.
(see page 4 for further details)

July:

- 1 Knapton Women's Own Strawberry Tea (Village Hall)
(see page 4 for further details)
- 21 Knapton Ladies Club 6:00 p.m. (Toghill, The Street)
Members' Summer Supper
- 17 Knapton Book Club

August:

- 23-24 Knapton Art Group Exhibition (Village Hall)

September:

- 7 Knapton Summer Fete

Weekly events:

Mondays	Pilates	1:45 p.m. (Village Hall)
Wednesdays	Keep Fit	7:00 p.m. (Village Hall)
Thursdays:	Art Class	7:00 p.m. (Village Hall)
Fridays:	Story Reading	4:00 p.m. (Mundesley Library)

Have you lost a cat?

A lovely cat was found on Hall Lane on Friday 9 May

Please contact 01263 720785

The Knapton Fete Committee

wish to announce that they have donated from last year's profits £100 to the East Anglian Air Ambulance and £100 to MacMillan Nurses.

#



**ZINC ALLOY
6TH MELTDOWN
RALLY
FRI 6 AND SAT 7
JUNE 2008
MADRA
LIVE BANDS INCLUDING**



Red Soxx Strange Fashion Q Tones Roxy and the Tinmen Cerberus

Tickets (available on the gate)

£10 for the weekend or £6 per day

Free entry for under 14s with an adult Parking £5

Would you like to see the bikes, but are not interested in the music?

We have arranged a special offer for Knapton residents to visit the display of bikes on Saturday afternoon (7 June) between 1:00 p.m. and 3:00 p.m. (NB a condition of purchasing this reduced price ticket is that you leave by 3:00 p.m.)

This special offer is a ticket only event. Tickets cost £3.00 (see above where the money goes!).

To obtain tickets, telephone Tricia on 01263 721855, or call at White Rose House, Hall Lane between 10:00 a.m. and 12:00 noon on Sat 7th

A Day Trip to London

On February 24th 2007, four people met to discuss whether it would be possible to arrange a reunion of former Knapton school pupils. We decided it could be done and lo and behold, from this our book 'Knapton Remembered' was born.

In the 1940's and 1950's, Knapton school children would have an outing once a year. Up to the age of ten years, the trip would be to Blakeney Point. Once the age of ten was reached, oh what joy, the destination was London! That was a long, long time ago!!

Very early on the morning of April 21st 2008, a coach arrived in Knapton to make another 'school' trip to London, this time to meet a friends of ours, a former Knapton school pupil, who had 'made it' to the House of Lords.

47 people boarded the coach, the majority being former pupils of Knapton school and the others were all connected with Knapton in some way, e.g. children and grandchildren (remember, we're all getting on a bit now!). On arrival, we were met at the Houses of Parliament by Jill - known to most people as Baroness Shephard of Northwold. Our bags and jackets were x-rayed, we were all 'frisked' and then divided into three groups for a grand tour of the Commons, Lords and Westminster Hall; and grand it was indeed, we were treated like royalty. Many of you will no doubt have visited the Houses of Parliament; many of us had not and I think we were all completely overwhelmed by the beauty of the place. We could 'feel' the history of this wonderful building.



Knapton Sports Team at North Walsham 1949

Following our tour of the Parliamentary buildings, we all met in the River Room in the House of Lords where we had a light snack lunch. The River Room is the one where there was the big row about the cost of the wallpaper - I have to say it did look rather nice! The Lord Speaker, Baroness Helene Hayman, joined us for lunch and I had the privilege of presenting her with a copy of our book 'Knapton Remembered'. Inside was written "To the Lord Speaker from all the authors".

This really was a day that none of us will ever forget and I think a lot of the credit for this must go to our former Head Teacher at Knapton School, the late Mrs Johnson - the way she taught us and the good examples she set really did stand us in good stead for life.

In July 2008, 16 of us will be off to Parliament again, when our project will be 'teamed up' with a similar one being carried out by a village in Northumberland.

Janet Munro (a former Knapton School Pupil)

KNAPTON VILLAGE PLAN PAINTING COMPETITION

CONGRATULATIONS TO THE WINNERS!!

10 to 18 years of age

Izzi, Seb and Freddie Gatfield (joint winners)

Adult

Denis Haynes

MADRA - The latest update

MADRA is a registered charity whose primary aim is to provide recreation and sports facilities to the residents of Knapton, and adjacent villages. Following the recent MADRA AGM, a new, dynamic committee has been formed. Members of the committee and many other enthusiastic volunteers have already helped to renovate the interior of the clubhouse, repair external fixtures, and tidy the grounds. Improved security at the site is also being introduced.

The committee comprises Steve Studd (chairman), Sue Ruffett, Sally Dodd (Treasurer), Nigel Cutting, Stacey Studd, Marcus Clare, Norman Dodd (Secretary), and Peter Ellmore.

The feedback from residents to the Knapton Village Plan Questionnaire has identified how MADRA can contribute more to life in our village. All of these ideas, and more, are being investigated and implemented. Inevitably, this leads us to the bane of many charities, social clubs etc. - investment. MADRA's most urgent requirements are replacement flooring, tables and chairs for the club

house. Approximately £2,000 is needed. We are chasing grants for this, especially from some new funding sources which have only just been introduced for clubs such as ours. A series of fund raising events will soon be announced. We welcome ideas from all regarding this.

Traditionally, football has not only been the dominant activity at MADRA, primarily in the form of Mundesley Football Club, but has also kept the club financially viable. However, this source of income has been in decline for some time, so it is more important than ever for the club to move forward. Despite this, there now exists a determined wish to succeed, and with your help this is achievable. The facilities available to us via MADRA are unmatched and a valuable resource to the village. The increase of Knapton residents joining the club, and renewing existing memberships, has given us a louder voice regarding the future of the club, our club, and its facilities. If you would like more information on any of the above issues please contact MADRA's Secretary, Norman Dodd, on 01263 721624.

NORFOLK CARE SERVICES

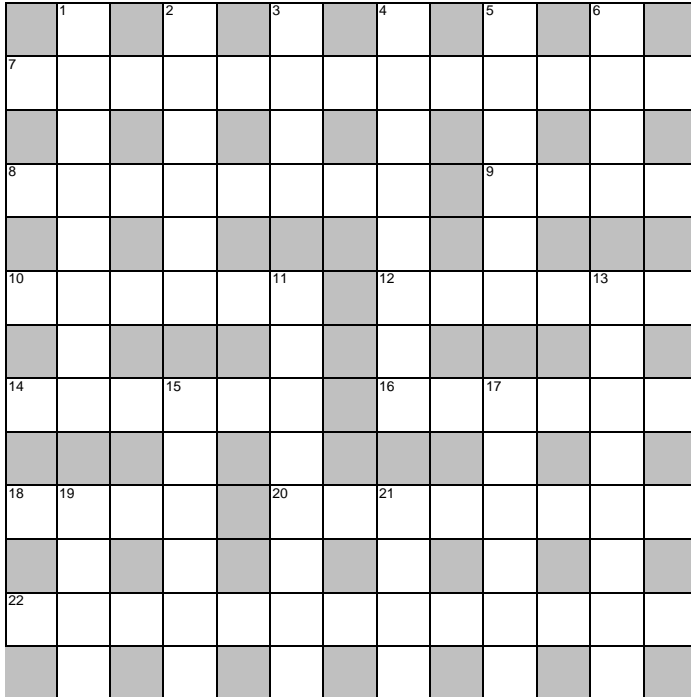
Norfolk County Council, in partnership with Care Choices Ltd., has produced a new directory to help people find the right care for themselves or a relative. The directory is packed with useful information that explains all the available care options available and includes comprehensive listings of care providers for residential care or care in your own home. It also contains guidance on paying for care and what financial assistance is available, information about Norfolk's Swift and Night Owls services and the technology that is available to help people living in their own homes for longer.

Care Choices also operate a free public information service which provides a shortlist of care homes that match the personal preferences of people looking for care. The helpline offers more detailed information about care providers such as staffing ratios, and if a home will allow residents to keep pets. The Helpline number is 0800 389 2077. To receive a free copy of the Care Services Directory and information about services available through Norfolk County Council ring: 0844 800 8014.

Norfolk County Council has worked in partnership with Care Choices to produce the directory and the listings of care providers are supplied by the Commission for Social Care Inspection (CSCI). Norfolk County Council's distribution of the Care Choices Directory does not constitute support or recommendation of any of the products or services advertised or listed in the directory.

Puzzle Page

Crossword - Issue 7



Across:

- 7. Continuous (13)
- 8. Forlorn (8)
- 9. Monster (4)
- 10. Provoke (6)
- 12. Gallows (6)
- 14. Courteous (6)
- 16. Diminish (6)
- 18. Scorch (4)
- 20. Forbearing (8)
- 22. Fourfold (13)

Down:

- 1. Subordinate (8)
- 2. Mean (6)
- 3. Arrears (4)
- 4. Wasteful (8)
- 5. Self-possession (6)
- 6. Scoff (4)
- 11. Momentous (8)
- 13. Timelessness (8)
- 15. Scrape (6)
- 17. Smart (6)
- 19. Pull (4)
- 21. Tranquillise (4)

WORDSEARCH



Can you find ten English-speaking countries hidden above?
The answers can be found running forwards or backwards, horizontal, vertical or diagonal.

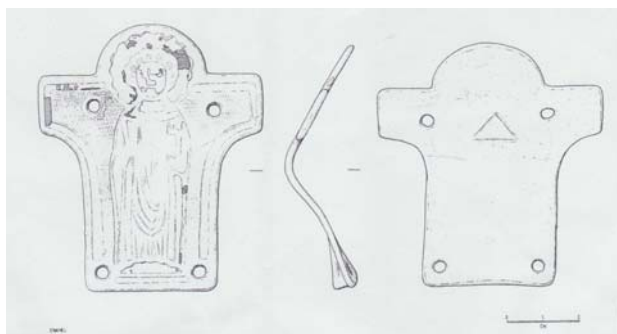
- 1) Australia
- 2) Canada
- 3) Gibraltar
- 4) Ireland
- 5) Jamaica
- 6) New Zealand
- 7) Seychelles
- 8) Singapore
- 9) South Africa
- 10) The Bahamas

Many thanks, as always, to Norman Dodd for producing our puzzle page. As you know, at the moment we do not print the answers to the puzzles, as this would necessitate printing another page for each newsletter. If you would like a copy of the answers to these puzzles, please contact Tricia on 721855. If we receive a large number of requests for the answer sheets, we may consider printing one in future editions.

Artifact found in Knapton!

While ploughing the field directly behind St Peter & St Paul Church, Steve Hammond has discovered a fascinating artifact (a sketch of which is shown below). Steve sent the item away to ascertain its provenance, and has been provided with the following information. If you would like to see this most interesting item, please contact Roger MacPhee, our local Vicar.

“Gilt T-shaped Limoges enamelled plate, the upper terminal from the vertical arm of large crucifix, worn and bent, with an engraved and enamelled depiction of a standing figure of Saint Peter, holding a book in his right hand and a key in his left hand. There are traces of white enamel on the face of the saint and dark blue enamel in the halo that has bordering concentric enamelled lines, the outer one white and the inner one red. There are traces of dark blue enamel in the folds of the robe. The horizontal upper edge of the plate is interrupted by a semi-circular projection, the edge of which follows the outside of the edge of St Peter’s halo. The angles between the horizontal and vertical elements of the plate are convex. The standing figure of the saint is flanked by a rectangular arrangement of four rivet-holes piercing a gilt field, one to one side of both shoulders and one in both corners at his feet. The decoration on the field comprises lines of fine pecked dots within an engraved bordering line that contains fragments of pale blue or turquoise enamel. There is an engraved triangle in the centre of the upper part of the reverse 62 x (unbent) 75mm. Cf. terminal plaques illustrated in *Enamels of Limoges 1100-1350* (1996), nos. 26, 62 and 67. Late 12th century.”



In the Garden with Elizabeth Purdy



This is the time of the year when we gardeners look forward to reaping the rewards for all our hard work over the winter months.

The wisteria has been glorious and the perfume, combined with that of the wallflowers growing below it, is intoxicating. The Ceanothus on the front of the house is a cloud of blue, with honeysuckle and the first roses in full bloom next to it. The leaves on the trees are coming out more and more each day, as the bluebells fade beneath them. Everything is so fresh and green.

Today it is raining for the first time in weeks - and not before time. A lot of new plants are wilting badly, and my vegetable seedlings are a write-off, not helped by the rabbits and pigeons feasting off them.

Jobs to do now: in the vegetable garden you can plant out courgettes, tomatoes and runner beans, and SOW late carrots and brassicas. Light hoeing helps keep the weeds down, prevents the soil becoming encrusted and allows the rain to penetrate the soil.

Early-flowering shrubs can be pruned, giving plenty of time for new growth to develop for a good show of flowers next year.

Soon the roses will be out and new buds are appearing each day. Mowing the grass is a bit of a chore, but then you can go out and sit in your garden, enjoy the beauty and the results of your hard work!



Knapton Summer Fete

Sunday 7 September 2008
Church Farm

**Volunteers needed
to man stalls and bake cakes**

If you can help, please ring
John Kemp on 01263 721723

Please start collecting bric-a-brac, books and plants

Knapton Art Club Art Exhibition

**Knapton Village Hall
Saturday 23 and Sunday 24 August
All Welcome!**



ARE YOU LOOKING FOR A BABYSITTER?

Seventeen year old girl is looking for babysitting work in Knapton

Lots of experience and good storyteller
£4.00 to £4.50 per hour (negotiable, depending on number of children)

Contact Izzi Gatfield
on 722458 or 07796 271489.